

# ADJUSTABLE ISO BAR DISASSEMBLY & REASSEMBLY GUIDE

**DISCLAIMER:** Kraus Motor Co. recommends that you defer to a certified mechanic or technician on any installation when possible. Refer to your OEM service manual for procedure, step by step procedures, required tools and specifications to make sure all pieces and parts are properly installed. Kraus Motor Co. is not responsible for improper installation of any OEM or Kraus component/kit. After completing installation, go for a slow, careful test ride. Afterwards, double check all pieces, parts and systems. Improper installation may result in severe injury or death.

## KRAUS ADJUSTABLE ISO BAR:

**\*\*\* NOTE:** Adjustable ISO Bars must be disassembled and checked for proper grommet and O-ring placement before final torques are made.

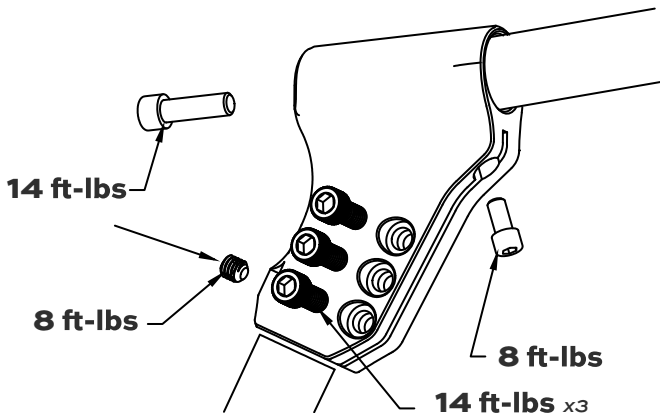
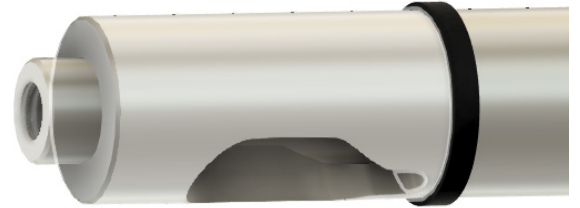
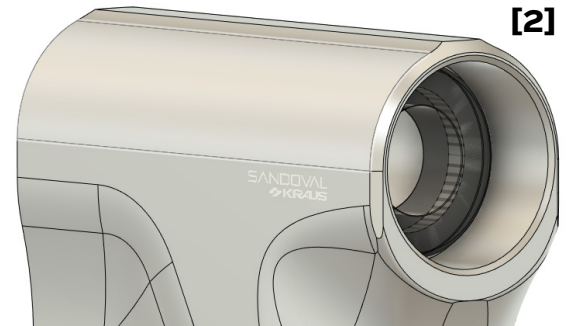
**\*\*\* NOTE:** Adjustable ISO Bars may also be disassembled for easier wire routing, and wires should be routed before Adjustable ISO Bars are final torqued.

## BAR ASSEMBLY AND INSTALLATION:

- 01 Make sure O-ring is around Bar End correctly. **[1]**
- 02 Ensure Grommet is installed around both sides of groove of Knuckle. **[2]**
- 03 Slide Bar End into Knuckle.
- \*\*\* TECH TIP:** Di-electric grease or silicone spray is recommended on Bar End's O-ring.
- \*\*\* NOTE:** Be careful not to fold over O-ring when sliding onto Knuckle.
- 04 Wires can be routed at this time. \*De-pinning is recommended.
- 05 After routed through Bar End and Knuckle, wires can be routed into Lower Bar, and bar can be simultaneously installed into the Knuckle.
- \*\*\* NOTE:** Be careful not to pinch wires as they are fed into the Knuckle from the Bar End side.
- 06 Ensure the Bar End is flush with Grommet. **[3]**
- 07 Rotate Bar End where Bar End passage can be seen through Knuckle so clocking screw can be installed. **[4]**
- 08 Install Bar End plug and screw.
- 09 Tighten the 3 screws of Knuckle lightly to keep Knuckle from easily turning with remainder of installation.
- 10 With Adjustable ISO Bars installed onto clamps, final positioning can be adjusted.
- 11 Torque all hardware. **See Torque Specs.**

## TORQUE SPECS

**NOTE:** Apply Loctite to all hardware when final torquing hardware.

**[1]****[2]****[3]****[4]**